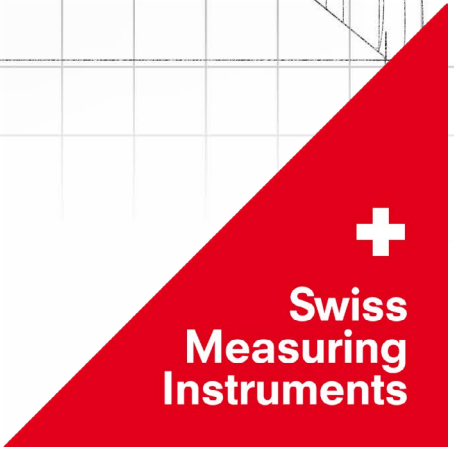


TRIMOS 2D ACC  
**MEASURE M**



## 프로브 세트 목차



### TA-SE-106 605 01 022

V3 V4 V5 V6 V7 V8 V9

프로브 세트 "Macro" (16피스)  
Set of accessories "Macro" (16pcs)

19



### TA-SE-105 605 01 023

V3 V4 V5 V6 V7 V8 V9

프로브 세트 "Micro" (20피스)  
Set of accessories "Micro" (20pcs)

21



### TA-SE-102 605 01 008

V3 V4 V5 V6 V7 V8 V9

프로브 세트 "Micro" (20피스)  
Set of accessories "Micro" (20pcs)

23

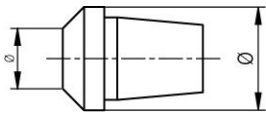


### TA-SE-107 605 01 024

V3 V4 V5 V6 V7 V8 V9

프로브 세트 "Eco" (7피스)  
Set of accessories "Eco" (7pcs)

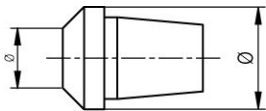
25



**TV2S2**  
779 901007 002

콘 프로브  
Cone Ø0-15 mm

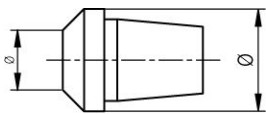
V1 V1+



**TV2S3**  
779 901007 003

콘 프로브  
Cone Ø13-20.5 mm

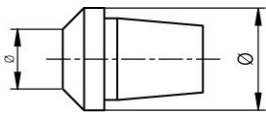
V1 V1+



**TV2S4**  
779 901007 004

콘 프로브  
Cone Ø17-24.5 mm

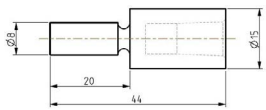
V1 V1+



**TV2S5**  
779 901007 005

콘 프로브  
Cone Ø23-30.5 mm

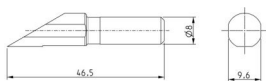
V1 V1+



**TA-IH-138**  
712 12 20 0010

콘 프로브 홀더  
Cone support

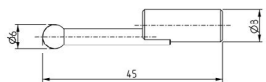
V1 V1+



**TA-MI-122**  
709 12 10 0003

스크라이버(기본 공급 V1)  
Scriber for V1

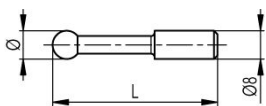
V1 V1+



**TA-MI-121**  
709 05 20 0124

초경 볼 프로브(기본 공급 V1+)  
Measuring insert with TC-Ball Ø6 mm for V1+

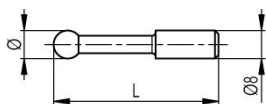
V1 V1+



**TVM2.4**  
709 05 20 0009

볼 프로브  
Ball insert Ø2 mm, L=41.6 mm

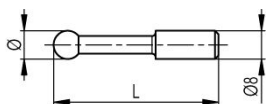
V1 V1+



**TVM2.3**  
709 05 20 0014

볼 프로브  
Ball insert Ø3 mm, L=42.5 mm

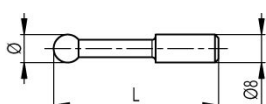
V1 V1+



**TVM2.2**  
709 05 20 0025

볼 프로브  
Ball insert Ø4 mm, L=43.5 mm

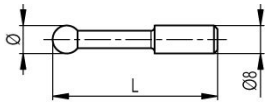
V1 V1+



**TVM2.6**  
709 05 20 0031

볼 프로브  
Ball insert Ø5 mm, L=43.9 mm

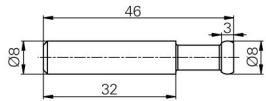
V1 V1+



**TVM2**  
709 05 20 0051

볼 프로브  
Ball insert Ø8 mm, L=47.3 mm

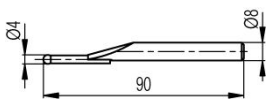
V1 V1+



**TVM2.5**  
709 05 20 0059

디스크형 프로브  
Disc shaped insert Ø8 mm

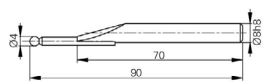
V1 V1+



**TA-MI-102**  
509 05 20 0075

초경 볼 프로브  
Measuring insert with tungst. carb. ball Ø4 mm, L=90 mm

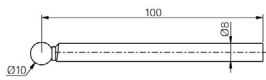
V1 V1+



**TA-MI-101**  
509 05 20 0074

루비 볼 프로브  
Measuring insert with ruby ball Ø4 mm, L=90 mm

V1 V1+



**TA-MI-108**  
279 918011 002

루비 볼 프로브  
Measuring insert with ruby ball Ø10 mm, L=100 mm

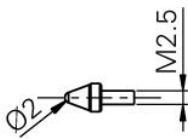
V1 V1+



**TA-MI-114**  
506 22 20 0063

양방향 핀 프로브  
Pin, 1 hemispheric and 1 plane face, L=100 mm

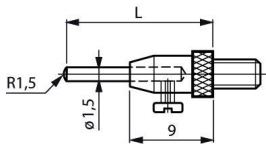
V1 V1+



**V-50.4**  
279 918010 001

깊이 측정용 프로브  
Measuring insert M2,5 with ball contact

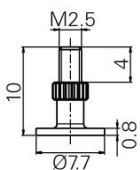
V1 V1+



**TA-MI-118**  
279 901003 001

핀 프로브 세트  
Measuring insert M2.5 with 4 interchangeable pins, L=16/26/36/46 mm

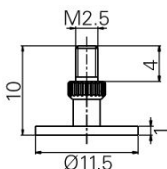
V1 V1+



**V-50.2.1**  
279 918005 002

디스크형 프로브  
Disc-shaped inserts M2.5, Ø7.7 mm

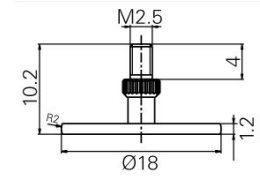
V1 V1+



**V-50.2.2**  
279 918005 003

디스크형 프로브  
Disc-shaped insert M2.5, Ø11.5 mm

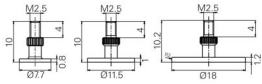
V1 V1+



**V-50.2.3**  
279 918005 004

디스크형 프로브  
Disc-shaped inserts M2.5, Ø18 mm

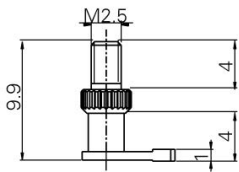
V1 V1+



**V-50.2**  
279 918005 001

디스크형 프로브 세트  
Set of 3 disc-shaped inserts M2.5,  
Ø 7.7 / 11.5 / 18 mm

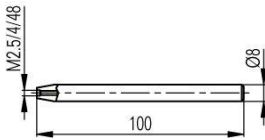
V1 V1+



**V-50.3**  
279 918008 001

코너 프로브  
Corner insert M2.5

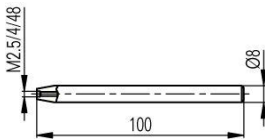
V1 V1+



**TVM6**  
512 11 20 0018

프로브 홀더  
Holder Ø8 mm for measuring inserts M2.5

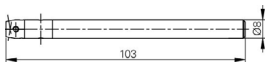
V1 V1+



**TVM6E**  
512 11 20 0019

프로브 홀더  
Holder Ø8 mm for measuring inserts 4-48

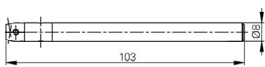
V1 V1+



**TA-IH-101**  
612 11 045

프로브 홀더  
Measuring insert holder M2.5, L=103 mm

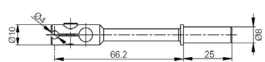
V1 V1+



**TA-IH-103**  
612 11 047

프로브 홀더  
Measuring insert holder 4-48, L=103 mm

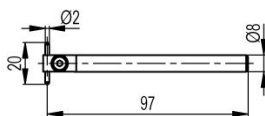
V1 V1+



**TA-IH-109**  
612 11 054

프로브 홀더  
Insert holder 90°, Ø4 mm

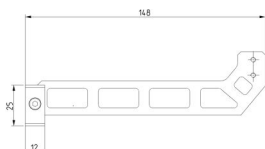
V1 V1+



**TVA4**  
609 05 007

핀 프로브 홀더  
Insert holder with pin Ø2 x 20 mm

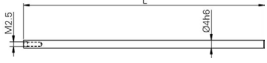
V1 V1+



**TA-IH-139**  
712 11 089

프로브 홀더  
Swivel holder Ø4 and Ø8 mm, L=148 mm

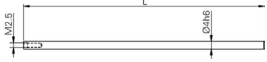
V1 V1+



**V-50.6**  
279 918002 002

깊이 측정용 홀더  
Measuring insert holder M2.5, L=80 mm

V1 V1+



**V-50.5**  
279 918002 001

깊이 측정용 홀더  
Measuring insert holder M2.5, L=124 mm

V1 V1+



**TA-MG-107**  
709 01 037

셋팅 게이지  
Setting gauge 4 mm

V1 V1+



**TA-SU-102**  
SP609 40 040 03

링 게이지 스탠드  
Measuring stand for master ring gauge  
TA-MG-001, (without ring)

V1 V1+



**TA-TO-102**  
614 00 007

데모 블록  
Demonstration piece

V1 V1+



**V-60**  
712 12 045

우든 케이스  
Wooden accessories support

V1 V1+



**TA-TO-118**  
705 05 10 0009

보호 커버  
Protection cover for V1/V1+ 300 mm

V1 V1+



**TA-TO-119**  
705 05 10 0011

보호 커버  
Protection cover for V1/V1+ 600 mm

V1 V1+



**TA-EL-112**  
716 20 001

데이터 연결 케이블  
Cable for RS232-PC connection

V1 V1+

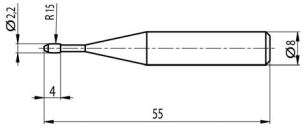


**BAT-TVM.  
OPT**  
3705 0002

배터리  
Battery (CR2032)

V1 V1+

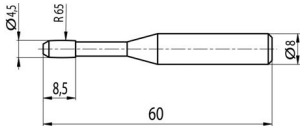
## 2차원 측정기 ACC



**TVA9.1**  
509 05 20 0011

원통형 프로브, M3-M16, 길이 L=55 mm  
Barrel-shaped insert M3-M16, L=55 mm

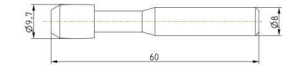
V2 V3 V4 V5 V6 V7 V8 V9



**TVA9.2**  
509 05 20 0029

원통형 프로브, M6-M48, 길이 L=60 mm  
Barrel-shaped insert M6-M48, L=60 mm

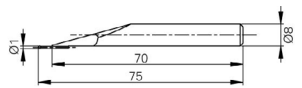
V2 V3 V4 V5 V6 V7 V8 V9



**TVA9.3**  
509 05 20 0062

원통형 프로브, M12-M150, 길이 L=60 mm  
Barrel-shaped insert M12-M150, L=60 mm

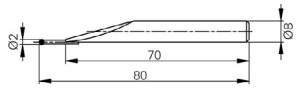
V2 V3 V4 V5 V6 V7 V8 V9



**TA-MI-111**  
509 05 20 0078

초경 볼 프로브, Ø1 mm, 길이 L=75 mm  
Measuring insert with tungst. carb. ball Ø1 mm, L=75 mm

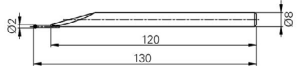
V2 V3 V4 V5 V6 V7 V8 V9



**TA-MI-110**  
509 05 20 0077

초경 볼 프로브, Ø2 mm, 길이 L=80 mm  
Measuring insert with tungst. carb. ball Ø2 mm, L=80 mm

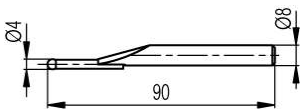
V2 V3 V4 V5 V6 V7 V8 V9



**TA-MI-104**  
509 05 20 0080

초경 볼 프로브, Ø2 mm, 길이 L=130 mm  
Measuring insert with tungst. carb. ball Ø2mm, L=130 mm

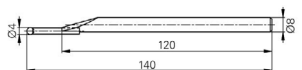
V2 V3 V4 V5 V6 V7 V8 V9



**TA-MI-102**  
509 05 20 0075

초경 볼 프로브, Ø4 mm, 길이 L=90 mm  
Measuring insert with tungst. carb. ball Ø4 mm, L=90 mm

V2 V3 V4 V5 V6 V7 V8 V9



**TA-MI-105**  
509 05 20 0079

초경 볼 프로브, Ø4 mm, 길이 L=140 mm  
Measuring insert with tungst. carb. ball Ø4 mm, L=140 mm

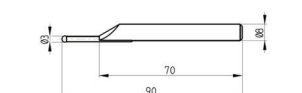
V2 V3 V4 V5 V6 V7 V8 V9



**TA-MI-106**  
279 918011 004

루비 볼 프로브, Ø5 mm, 길이 L=129 mm  
Measuring insert with ruby ball Ø5 mm, L=129 mm

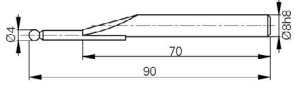
V2 V3 V4 V5 V6 V7 V8 V9



**TA-MI-120**  
SP509 05 20 0086

루비 볼 프로브, Ø3 mm, 길이 L=90 mm  
Measuring insert with ruby ball Ø3 mm, L=90 mm

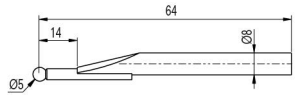
V2 V3 V4 V5 V6 V7 V8 V9



**TA-MI-101**  
509 05 20 0074

루비 볼 프로브, Ø4 mm, 길이 L=90 mm  
(기본 공급 M2 - V7)  
Measuring insert with ruby ball Ø4 mm,  
L=90 mm

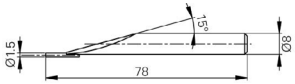
V2 V3 V4 V5 V6 V7 V8 V9



**TA-MI-119**  
SP279 918011 005

루비 볼 프로브, Ø5 mm, 길이 L=64 mm  
(기본 공급 V8, V9)  
Measuring insert with ruby ball Ø5 mm,  
L=64 mm

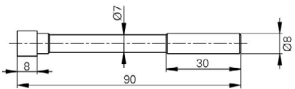
V2 V3 V4 V5 V6 V7 V8 V9



**TA-MI-107**  
509 05 20 0081

원통형(핀) 프로브, Ø1.5 mm, 길이 L=78 mm  
Measuring insert with pin Ø1.5 mm, L=78 mm

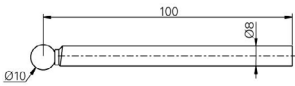
V2 V3 V4 V5 V6 V7 V8 V9



**TA-MI-112**  
509 05 20 0082

평면 사각 프로브, 10x10 mm, 길이 L=90 mm  
Measuring insert with parallel faces, 10x10 mm,  
L=90 mm

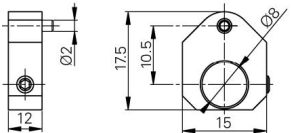
V2 V3 V4 V5 V6 V7 V8 V9



**TA-MI-108**  
279 918011 002

루비 볼 프로브, Ø10 mm, 길이 L=100 mm  
Measuring insert with ruby ball Ø10 mm,  
L=100 mm

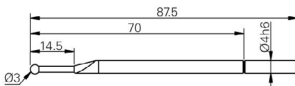
V2 V3 V4 V5 V6 V7 V8 V9



**TA-AD-101**  
603 11 001

프로브 위치 고정 홀더, Ø8 mm  
Positioning holder for measuring insert Ø8 mm

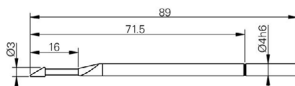
V2 V3 V4 V5 V6 V7 V8 V9



**TA-MI-109**  
279 918011 003

루비 볼 프로브, Ø3 mm, 길이 L=87.5 mm  
Measuring insert with ruby ball Ø3 mm,  
L=87.5 mm

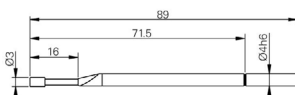
V2 V3 V4 V5 V6 V7 V8 V9



**V-50.10**  
279 918007 001

나이프 에지 프로브  
Knife-edge insert

V2 V3 V4 V5 V6 V7 V8 V9

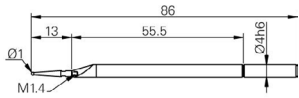


**V-50.11**  
279 918013 001

원통형 프로브, Ø3x5 mm, 길이 L=89 mm  
Barrel-shaped insert Ø3x5 mm, L=89 mm

V2 V3 V4 V5 V6 V7 V8 V9





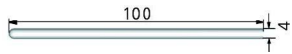
### V-50.12

279 918012 001

초경 볼 프로브, Ø1 mm, 길이 L=86 mm

Measuring insert Ø1 mm with holder, L=86 mm

V2 V3 V4 V5 V6 V7 V8 V9



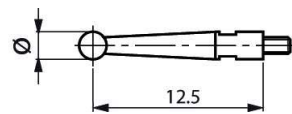
### TA-MI-114

506 22 20 0063

양방향 핀 프로브, 길이 L=100 mm

Pin, 1 hemispheric and 1 plane face, L=100 mm

V2 V3 V4 V5 V6 V7 V8 V9



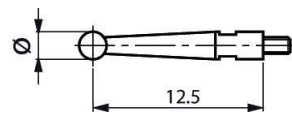
### TA-MI-115

279 901001 001

초경 볼 프로브, Ø1 mm, 길이 L=12.5 mm, M1.4

Measuring insert M1.4 with ball Ø1 mm, L=12.5 mm

V2 V3 V4 V5 V6 V7 V8 V9



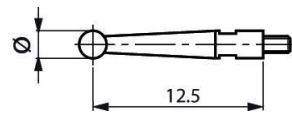
### TA-MI-116

279 901001 002

초경 볼 프로브, Ø2 mm, 길이 L=12.5 mm, M1.4

Measuring insert M1.4 with ball Ø2 mm, L=12.5 mm

V2 V3 V4 V5 V6 V7 V8 V9



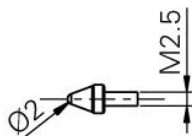
### TA-MI-117

279 901001 003

초경 볼 프로브, Ø3 mm, 길이 L=12.5 mm, M1.4

Measuring insert M1.4 with ball Ø3 mm, L=12.5 mm

V2 V3 V4 V5 V6 V7 V8 V9



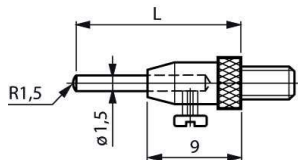
### V-50.4

279 918010 001

깊이 측정용 볼 프로브, Ø2 mm, M2.5

Measuring insert M2,5 with ball contact

V2 V3 V4 V5 V6 V7 V8 V9



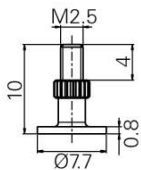
### TA-MI-118

279 901003 001

핀 프로브 세트, M2.5, 길이 L=16/26/36/46 mm

Measuring insert M2.5 with 4 interchangeable pins, L=16/26/36/46 mm

V2 V3 V4 V5 V6 V7 V8 V9



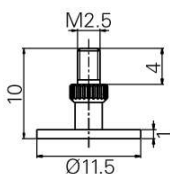
### V-50.2.1

279 918005 002

디스크형 프로브, Ø7.7 mm, M2.5

Disc-shaped inserts M2.5, Ø7.7 mm

V2 V3 V4 V5 V6 V7 V8 V9



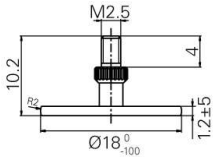
### V-50.2.2

279 918005 003

디스크형 프로브, Ø11.5 mm, M2.5

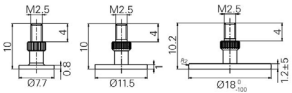
Disc-shaped insert M2.5, Ø11.5 mm

V2 V3 V4 V5 V6 V7 V8 V9



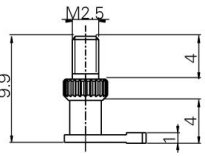
**V-50.2.3** 디스크형 프로브, Ø18 mm, M2.5  
279 918005 004 Disc-shaped inserts Ø18 mm, M2.5

V2 V3 V4 V5 V6 V7 V8 V9



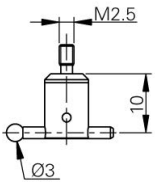
**V-50.2** 디스크형 프로브 세트 M2.5 (Ø7.7/11.5/18 mm)  
279 918005 001 Set of 3 disc-shaped inserts M2.5, Ø7.7/11.5/18 mm

V2 V3 V4 V5 V6 V7 V8 V9



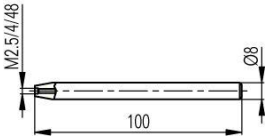
**V-50.3** 코너 프로브, M2.5  
279 918008 001 Corner insert M2.5

V2 V3 V4 V5 V6 V7 V8 V9



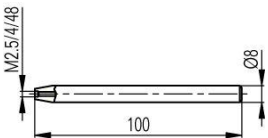
**V-50.1** 루비 볼 프로브, Ø3 mm, M2.5  
279 918009 001 Measuring insert M2.5 with ruby ball Ø3 mm

V2 V3 V4 V5 V6 V7 V8 V9



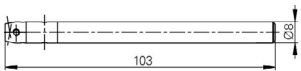
**TVM6** 인서트 측정용 홀더, Ø8 mm, M2.5  
512 11 20 0018 Holder Ø8 mm for measuring inserts M2.5

V2 V3 V4 V5 V6 V7 V8 V9



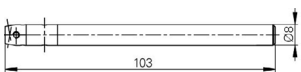
**TVM6E** 인서트 측정용 홀더, Ø8 mm, 4-48  
512 11 20 0019 Holder Ø8 mm for measuring inserts 4-48

V2 V3 V4 V5 V6 V7 V8 V9



**TA-IH-101** 프로브 홀더, M2.5, 길이 L=103 mm  
612 11 045 Measuring insert holder M2.5, L=103 mm

V2 V3 V4 V5 V6 V7 V8 V9



**TA-IH-103** 프로브 홀더, 4 - 48, 길이 L=103 mm  
612 11 047 Measuring insert holder 4 - 48, L=103 mm

V2 V3 V4 V5 V6 V7 V8 V9



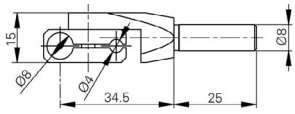
**TA-IH-102** 프로브 홀더, M2.5, 길이 L=300 mm  
612 11 046 Measuring insert holder M2.5, L=300 mm

V2 V3 V4 V5 V6 V7 V8 V9



**TA-IH-119** 프로브 홀더, (")4 - 48, 길이 L=300 mm  
612 11 048 Measuring insert holder (")4 - 48, L=300 mm

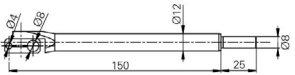
V2 V3 V4 V5 V6 V7 V8 V9



**TA-IH-104**  
612 11 053

깊이 측정용 회전 홀더, Ø4 and Ø8 mm  
Swivel holder Ø4 and Ø8 mm

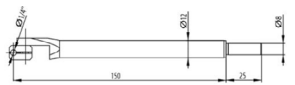
V2 V3 V4 V5 V6 V7 V8 V9



**TA-IH-105**  
612 11 051

깊이 측정용 회전 홀더, Ø4 and Ø8 mm,  
길이 L=150 mm  
Swivel holder Ø4 and Ø8 mm, L=150 mm

V2 V3 V4 V5 V6 V7 V8 V9



**V-2E/D1/4/L1**  
612 11 013

깊이 측정용 회전 홀더, Ø1/4", 길이 L=150 mm  
Swivel holder Ø1/4", L=150 mm

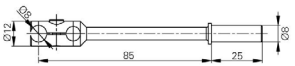
V2 V3 V4 V5 V6 V7 V8 V9



**TA-IH-106**  
612 11 039

깊이 측정용 회전 홀더, Ø4 and Ø8 mm,  
길이 L=300 mm  
Swivel holder Ø4 and Ø8 mm, L=300 mm

V2 V3 V4 V5 V6 V7 V8 V9



**TA-IH-107**  
612 11 055

깊이 측정용 홀더, 90°, Ø8 mm  
Insert holder 90°, Ø8 mm

V2 V3 V4 V5 V6 V7 V8 V9



**TA-IH-108**  
612 11 052

깊이 측정용 홀더, 90°, Ø8 mm, 길이 L=150 mm  
Insert holder 90°, Ø8 mm, L=150 mm

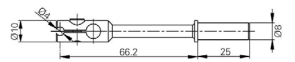
V2 V3 V4 V5 V6 V7 V8 V9



**TA-IH-129**  
612 11 040

깊이 측정용 홀더, 90°, Ø8 mm, 길이 L=300 mm  
Holder at 90°, Ø8mm, L=300 mm

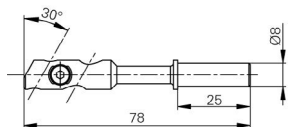
V2 V3 V4 V5 V6 V7 V8 V9



**TA-IH-109**  
612 11 054

깊이 측정용 홀더, 90°, Ø4 mm  
Insert holder 90°, Ø4 mm

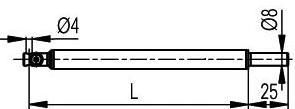
V2 V3 V4 V5 V6 V7 V8 V9



**V-4**  
612 11 011

깊이 측정용 홀더, 30°, Ø4 mm  
Insert holder 30°, Ø4 mm

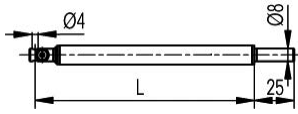
V2 V3 V4 V5 V6 V7 V8 V9



**TA-IH-111**  
612 11 041

깊이 측정용 홀더, 90°, Ø4 mm, 길이 L=150 mm  
Insert holder 90°, Ø4 mm, L=150 mm

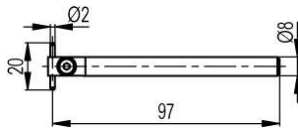
V2 V3 V4 V5 V6 V7 V8 V9



**TA-IH-112**  
612 11 042

깊이 측정용 홀더, 90°, Ø4 mm, 길이 L=300 mm  
Insert holder 90°, Ø4 mm, L=300 mm

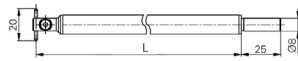
V2 V3 V4 V5 V6 V7 V8 V9



**TVA4**  
609 05 007

핀 프로브 홀더, Ø2x20 mm  
Insert holder with pin Ø2x20 mm

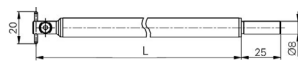
V2 V3 V4 V5 V6 V7 V8 V9



**TA-IH-113**  
612 11 043

핀 프로브 홀더, Ø2x20 mm, 길이 L=200 mm  
Insert holder with pin Ø2x20 mm, L=200 mm

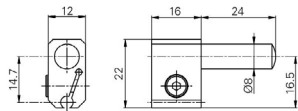
V2 V3 V4 V5 V6 V7 V8 V9



**TA-IH-114**  
612 11 044

핀 프로브 홀더, Ø2x20 mm, 길이 L=300 mm  
Insert holder with pin Ø2x20 mm, L=300 mm

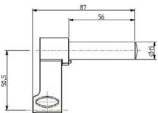
V2 V3 V4 V5 V6 V7 V8 V9



**V-5**  
612 11 012

프로브 호환 홀더, Ø8/Ø4 mm  
Reduction Ø8/Ø4 mm

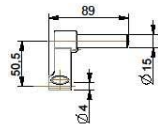
V2 V3 V4 V5 V6 V7 V8 V9



**TA-IH-135**  
612 11 065

프로브 홀더, Ø8 mm(기본 공급)  
Standard insert holder Ø8 mm

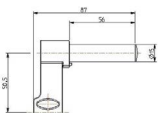
V2 V3 V4 V5 V6 V7 V8 V9



**TA-IH-128**  
612 11 067

프로브 홀더, Ø4 mm  
Measuring insert holder Ø4 mm

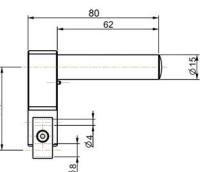
V2 V3 V4 V5 V6 V7 V8 V9



**TA-IH-137**  
SP612 11 065 01

프로브 홀더, Ø6 mm  
Measuring insert holder Ø6 mm

V2 V3 V4 V5 V6 V7 V8 V9



**TA-IH-130**  
612 11 072

회전형 프로브 홀더, Ø4 and Ø8 mm  
Swivel holder Ø4 and Ø8 mm

V2 V3 V4 V5 V6 V7 V8 V9



**TA-IH-127**  
612 11 066

프로브 홀더 Ø8 mm, 길이 L=400 mm  
Insert holder Ø8 mm, L=400 mm

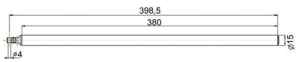
V2 V3 V4 V5 V6 V7 V8 V9



**TA-IH-131**  
612 11 068

깊이 측정용 회전 홀더, Ø4 and Ø8 mm,  
길이 L=400 mm  
Swivel holder Ø4 and Ø8 mm, L=400 mm

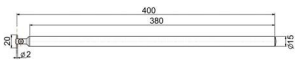
V2 V3 V4 V5 V6 V7 V8 V9



**TA-IH-132**  
612 11 069

깊이 측정용 홀더, Ø4 mm, 길이 L=400 mm  
Insert holder 90°, Ø4 mm, L=400 mm

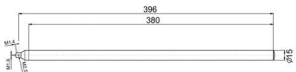
V2 V3 V4 V5 V6 V7 V8 V9



**TA-IH-133**  
612 11 070

핀 프로브 홀더, Ø2x20 mm, 길이 L=400 mm  
Insert holder with pin Ø2x20 mm, L=400 mm

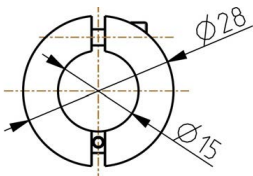
V2 V3 V4 V5 V6 V7 V8 V9



**TA-IH-134**  
612 11 071

프로브 홀더, M2.5, 길이 L=400 mm  
Measuring insert holder M2.5, L=400 mm

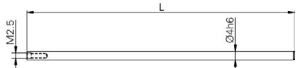
V2 V3 V4 V5 V6 V7 V8 V9



**TA-AD-105**  
603 11 003

프로브 위치 고정 홀더, Ø15 mm  
Positioning holder for measuring insert Ø15 mm

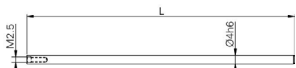
V2 V3 V4 V5 V6 V7 V8 V9



**V-50.6**  
279 918002 002

깊이 측정용 홀더, M2.5, 길이 L=80 mm  
Measuring insert holder M2.5, L=80 mm

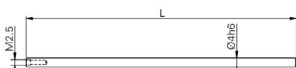
V2 V3 V4 V5 V6 V7 V8 V9



**V-50.5**  
279 918002 001

깊이 측정용 홀더, M2.5, 길이 L=124 mm  
Measuring insert holder M2.5, L=124 mm

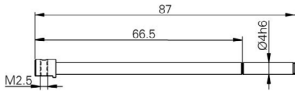
V2 V3 V4 V5 V6 V7 V8 V9



**TA-IH-115**  
279 918002 003

깊이 측정용 홀더, M2.5, 길이 L=200 mm  
Measuring insert holder M2.5, L=200 mm

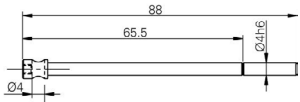
V2 V3 V4 V5 V6 V7 V8 V9



**V-50.7**  
279 918001 002

깊이 측정용 홀더, 90°, M2.5  
Insert holder 90°, M2.5

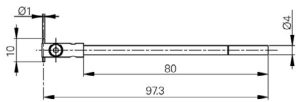
V2 V3 V4 V5 V6 V7 V8 V9



**V-50.8**  
279 918001 001

깊이 측정용 홀더, 90°, Ø4 mm  
Insert holder 90°, Ø4 mm

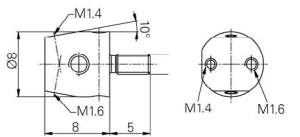
V2 V3 V4 V5 V6 V7 V8 V9



**TA-IH-116**  
279 918001 003

핀 프로브 홀더, Ø1x10 mm, 길이 L=80 mm  
Measuring insert holder, Ø1x10 mm, L=80 mm

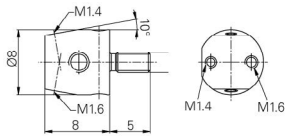
V2 V3 V4 V5 V6 V7 V8 V9



**TA-IH-117**  
512 11 20 0012

프로브 홀더, M2.5, M1.6, M1.4  
Holder for measuring inserts M2.5, M1.6, M1.4

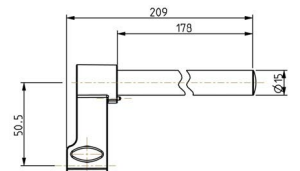
V2 V3 V4 V5 V6 V7 V8 V9



**TA-IH-118**  
512 11 20 0013

프로브 홀더, 4-48, M1.6, M1.4  
Holder for measuring inserts 4-48, M1.6, M1.4

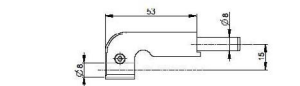
V2 V3 V4 V5 V6 V7 V8 V9



**TA-IH-136**  
612 11 073

직각도 프로브 홀더, Ø8 mm, 길이 L=200 mm  
Insert holder Ø8 mm, L=200 mm, Holder for perpendicularity probe

V2 V3 V4 V5 V6 V7 V8 V9



**TA-IH-126**  
612 07 006

직각도 프로브용 홀더, Ø8 mm  
Holder for perpendicularity probe

V2 V3 V4 V5 V6 V7 V8 V9



**TA-MS-101**  
276 940001 001

직각도 프로브, 400mm & 700mm  
Perpendicularity probe for V6/V7/V8/V9-400/700,  
(without support - V6/V7: TA-IH-136 & V8/V9:  
TA-MS-101, TA-MS-102, TA-IH-126)

V2 V3 V4 V5 V6 V7 V8 V9



**TA-MS-102**  
276 940001 002

직각도 프로브, 1100mm  
Perpendicularity probe for V6/V7/V8/V9-1100,  
(without support - V6/V7: TA-IH-136 & V8/V9:  
TA-MS-101, TA-MS-102, TA-IH-126)

V2 V3 V4 V5 V6 V7 V8 V9



**TA-MS-104**  
609 02 021

직각도 프로브, 1800mm  
Perpendicularity probe for V7-1800, (without support TA-IH-136)

V2 V3 V4 V5 V6 V7 V8 V9



**TA-SU-101**  
740 02 001

평행 위치 고정 나사 세트  
Pair of abutment screw for instrument base V4-V9

V2 V3 V4 V5 V6 V7 V8 V9



**TA-SE-106**  
605 01 022

프로브 세트 "Macro" (16피스)  
Set of accessories "Macro" (16pcs)

V2 V3 V4 V5 V6 V7 V8 V9



**TA-SE-102**  
605 01 008

프로브 세트 "Micro" (20피스)  
Set of accessories "Micro" (20pcs)

V2 V3 V4 V5 V6 V7 V8 V9



**TA-SE-105**  
605 01 023

프로브 세트 "Micro" (20피스)  
Set of accessories "Micro" (20pcs)

V2 V3 V4 V5 V6 V7 V8 V9



**TA-SE-107**  
605 01 024

프로브 세트 "Eco" (7피스)  
Set of accessories "Eco" (7pcs)

V2 V3 V4 V5 V6 V7 V8 V9



**TA-MG-104**  
609 01 032

셋팅 게이지 25 mm  
Setting gauge 25 mm

V2 V3 V4 V5 V6 V7 V8 V9



**TA-MG-105**  
SP609 01 032 02

셋팅 게이지 0 m, H=100 mm  
Setting gauge with height and diameter H=100 mm

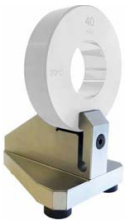
V2 V3 V4 V5 V6 V7 V8 V9



**TA-MG-107**  
709 01 037

셋팅 게이지 4 mm  
Setting gauge 4 mm

V2 V3 V4 V5 V6 V7 V8 V9



**TA-SU-102**  
SP609 40 040 03

링 게이지용 스탠드(링 게이지 미포함)  
Measuring stand for master ring gauge  
TA-MG-001, (without ring)

V2 V3 V4 V5 V6 V7 V8 V9



**TA-TO-102**  
614 00 007

데모 블록  
Demonstration piece

V2 V3 V4 V5 V6 V7 V8 V9



**V-60**  
612 12 045

우든 케이스  
Wooden accessories support

V2 V3 V4 V5 V6 V7 V8 V9



**V-50.13**  
290 918001 001

프로브 체결 렌치  
Wrench for measuring inserts

V2 V3 V4 V5 V6 V7 V8 V9



**TA-TO-114**  
505 05 10 0041

보호 커버, M2 & V3-V9/400 mm  
Protection cover for V3 - V9 - 400

V2 V3 V4 V5 V6 V7 V8 V9



**TA-TO-115**  
505 05 10 0042

보호 커버, M2 - V9/700 mm  
Protection cover for V3 ÷ V9 - 700

V2 V3 V4 V5 V6 V7 V8 V9



**TA-TO-116**  
505 05 10 0043

보호 커버, V5 - V9/1100 mm  
Protection cover for V5 - V9 - 1100

V2 V3 V4 V5 V6 V7 V8 V9



**TA-TO-117**  
505 05 10 0044

보호 커버, V7 - 1800 / 1800 mm  
Protection cover for V7 - 1800

V2 V3 V4 V5 V6 V7 V8 V9





**TA-EL-112**  
716 20 001

데이터 연결 케이블, RS232-PC(PC)  
Cable for RS232-PC connection

V2 V3 V4 V5 V6 V7 V8 V9



	<b>TA-EL-013</b> 332 02 0001	데이터 연결 케이블, USB A-B(PC) USB A-B connection cable, L=1.8 m	<b>V2 V3 V4 V5 V6 V7 V8 V9</b>
	<b>TA-EL-014</b> 332 02 0002	데이터 연결 케이블, USB A-Mini B(PC) USB A-Mini B connection cable, L=1.8m	<b>V2 V3 V4 V5 V6 V7 V8 V9</b>
	<b>TA-EL-022</b> 716 35 008	무선 데이터 전송 시스템 Wireless data transmission system, 1xdongle for the instrument & 1xUSB dongle for PC	<b>V2 V3 V4 V5 V6 V7 V8 V9</b>
	<b>TA-EL-032</b> 756 0018	감열지 프린터 세트, V3-V6, V8 Thermal printer with holder, AC adapter and RS232 cable, (for V3 - V6)	<b>V2 V3 V4 V5 V6 V7 V8 V9</b>
	<b>TA-EL-033</b> 756 0020	감열지 프린터 세트, V7 & V9 Thermal printer with holder, AC adapter and RS232 cable, (for V7 & V9)	<b>V2 V3 V4 V5 V6 V7 V8 V9</b>
	<b>V-30.7</b> 788 000001 001	감열지 프린터 용지 (5개) Paper rolls (5pcs) for thermal printer	<b>V2 V3 V4 V5 V6 V7 V8 V9</b>
	<b>TA-EL-063</b> 3704 0024	감열지 프린터 배터리 Battery pack for printer TA-EL-032 & TA-EL-033	<b>V2 V3 V4 V5 V6 V7 V8 V9</b>
	<b>TA-EL-016</b> 332 08 0001	디스플레이 연결 케이블(HDMI) Connection cable Instrument-Display 0.23 m (HDMI)	<b>V2 V3 V4 V5 V6 V7 V8 V9</b>
	<b>TA-EL-132</b> 716 70 010	어댑터 세트, AC/DC 100-240V/12V - 3A Adapter AC/DC 100-240V/12V - 3A (with adapter)	<b>V2 V3 V4 V5 V6 V7 V8 V9</b>

## 2차원 측정기 ACC



**TA-EL-133**  
716 70 009

어댑터 세트, AC/DC 100-240V/12V - 2.5A  
Adapter AC/DC 100-240V/12V - 2.5A  
(with adapter)

V2 V3 V4 V5 V6 V7 V8 V9



**TA-EL-060**  
3704 0021

배터리 팩 V2-V6, V8 (Li-ion 7.2V - 2600mA/h)  
Battery pack for V2, V3, V4, V5, V6 & V8,  
(Li-ion 7.2V - 2600mA/h)

V2 V3 V4 V5 V6 V7 V8 V9



**TA-EL-061**  
3704 0022

배터리 팩 V7 & V9 (Li-ion 7.2V - 10.4A/h)  
Battery pack for V7 & V9, (Li-ion 7.2V -  
10.4./h)

V2 V3 V4 V5 V6 V7 V8 V9



**TA-EL-062**  
3705 0005

디스플레이 배터리 V7 & V9  
Back-up battery (CR1632)

V2 V3 V4 V5 V6 V7 V8 V9



**TA-SW-002**  
394 1 0051

데이터 전송 프로그램(TrimosDataTransfer)  
Software for data transfer (TrimosDataTransfer)

V2 V3 V4 V5 V6 V7 V8 V9



**TA-SW-003**  
394 1 0052

데이터 전송 프로그램(TrimosDataTransfer  
Advanced), 가상 COM-port 생성  
Software for data transfer (TrimosDataTransfer  
Advanced), with virtual COM-port creation

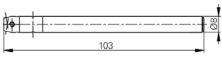
V2 V3 V4 V5 V6 V7 V8 V9



**TA-SE-106**  
605 01 022

프로브 세트 "Macro" (16피스)  
Set of accessories "Macro" (16pcs)

V3 V4 V5 V6 V7 V8 V9



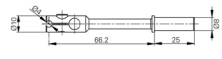
**TA-IH-101**  
612 11 045

프로브 홀더, M2.5, 길이 L=103 mm  
Measuring insert holder M2.5, L=103 mm



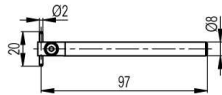
**TA-IH-105**  
612 11 051

깊이 측정용 회전 홀더, Ø1/4", 길이 L=150 mm  
Swivel holder Ø1/4", L=150 mm



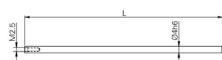
**TA-IH-109**  
612 11 054

깊이 측정용 홀더, 90°, Ø4 mm  
Insert holder 90°, Ø4 mm



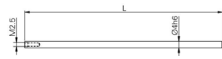
**TVA4**  
609 05 007

핀 프로브 홀더, Ø2x20 mm  
Insert holder with pin Ø2 x 20 mm



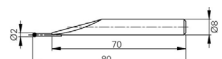
**V-50.5**  
279 918002 001

깊이 측정용 홀더, M2.5, 길이 L=124 mm  
Measuring insert holder M2.5, L=124 mm



**TA-IH-115**  
279 918002 003

깊이 측정용 홀더, M2.5, 길이 L=200 mm  
Measuring insert holder M2.5, L=200 mm



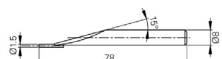
**TA-MI-110**  
509 05 20 0077

초경 볼 프로브, Ø2 mm, 길이 L=80 mm  
Measuring insert with tungst. carb. ball Ø2 mm, L=80 mm



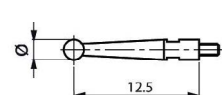
**TA-MI-105**  
509 05 20 0079

초경 볼 프로브, Ø4 mm, 길이 L=140 mm  
Measuring insert with tungst. carb. ball Ø4 mm, L=140 mm



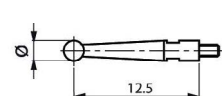
**TA-MI-107**  
509 05 20 0081

원통형(핀) 프로브, Ø1.5 mm, 길이 L=78 mm  
Measuring insert with pin Ø1.5 mm, L=78 mm



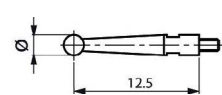
**TA-MI-115**  
279 901001 001

초경 볼 프로브, Ø1 mm, 길이 L=12.5mm, M1.4  
Measuring insert M1.4 with ball Ø1 mm L=12.5 mm



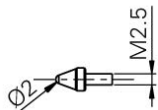
**TA-MI-116**  
279 901001 002

초경 볼 프로브, Ø2 mm, 길이 L=12.5mm, M1.4  
Measuring insert M1.4 with ball Ø2 mm L=12.5 mm

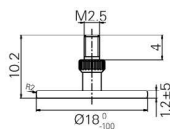


**TA-MI-117**  
279 901001 003

초경 볼 프로브, Ø3 mm, 길이 L=12.5mm, M1.4  
Measuring insert M1.4 with ball Ø3 mm L=12.5 mm



**V-50.4**      깊이 측정용 볼 프로브, Ø2 mm, M2.5  
279 918010 001      Measuring insert M2,5 with ball contact



**V-50.2.3**      디스크형 프로브, Ø18 mm, M2.5  
279 918005 004      Disc-shaped inserts M2.5, Ø18 mm



**V-50.13**      프로브 체결 렌치  
290 918001 001      Wrench for measuring inserts

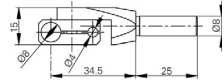


**V-50.15**      육각렌치 2.5 mm  
290 000911 005      Allen key 2.5 mm

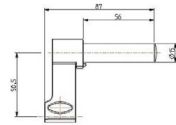


**TA-SE-105**    프로브 세트 "Micro" (20피스)  
605 01 023    Set of accessories "Micro" (20pcs)

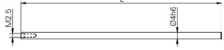
V3 V4 V5 V6 V7 V8 V9



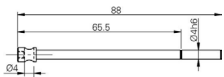
**TA-IH-104**    깊이 측정용 회전 홀더, Ø1/4", 길이 L=150 mm  
612 11 053    Swivel holder Ø1/4 ", L=150 mm



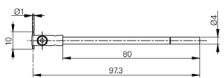
**TA-IH-128**    프로브 홀더, Ø4 mm  
612 11 067    Measuring insert holder Ø4 mm



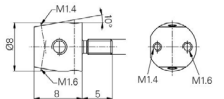
**V-50.6**    깊이 측정용 홀더, M2.5, 길이 L=80 mm  
279 918002 002    Measuring insert holder M2.5, L=80 mm



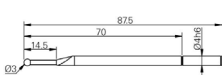
**V-50.8**    깊이 측정용 홀더, 90°, Ø4 mm  
279 918001 001    Insert holder 90°, Ø4 mm



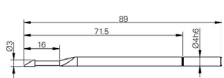
**TA-IH-116**    핀 프로브 홀더, Ø1x10 mm, 길이 L=80 mm  
279 918001 003    Measuring insert holder, Ø1x10 mm, L=80 mm



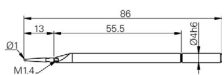
**TA-IH-117**    프로브 홀더, M2.5, M1.6, M1.4  
512 11 20 0012    Holder for measuring inserts M2.5, M1.6, M1.4



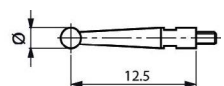
**TA-MI-109**    루비 볼 프로브, Ø3 mm, 길이 L=87.5 mm  
279 918011 003    Measuring insert with ruby ball Ø3 mm, L=87.5 mm



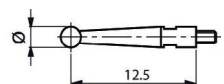
**V-50.10**    나이프 에지 프로브  
279 918007 001    Knife-edge insert



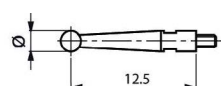
**V-50.12**    초경 볼 프로브, Ø1 mm, 길이 L=86 mm  
279 918012 001    Measuring insert Ø1 mm with holder, L=86 mm



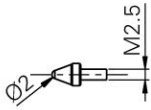
**TA-MI-115**    초경 볼 프로브, Ø1 mm, 길이 L=12.5 mm, M1.4  
279 901001 001    Measuring insert M1.4 with ball Ø1 mm, L=12.5 mm



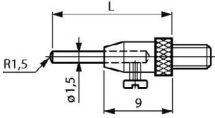
**TA-MI-116**    초경 볼 프로브, Ø2 mm, 길이 L=12.5 mm, M1.4  
279 901001 002    Measuring insert M1.4 with ball Ø2 mm, L=12.5 mm



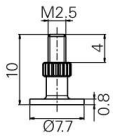
**TA-MI-117**    초경 볼 프로브, Ø3 mm, 길이 L=12.5 mm, M1.4  
279 901001 003    Measuring insert M1.4 with ball Ø3 mm, L=12.5 mm



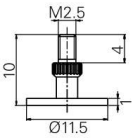
**V-50.4**      깊이 측정용 볼 프로브, Ø2 mm, M2.5  
279 918010 001      Measuring insert M2,5 with ball contact



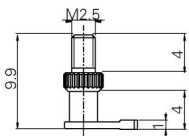
**TA-MI-118**      핀 프로브 세트, M2.5, 길이 L=16/26/36/46 mm  
279 901003 001      Measuring insert M2.5 with 4 interchangeable pins, L=16/26/36/46 mm



**V-50.2.1**      디스크형 프로브, Ø7.7 mm, M2.5  
279 918005 002      Disc-shaped inserts M2.5, Ø7.7 mm



**V-50.2.2**      디스크형 프로브, Ø11.5 mm, M2.5  
279 918005 003      Disc-shaped insert M2.5, Ø11.5 mm



**V-50.3**      코너 프로브, M2.5  
279 918008 001      Corner insert M2.5



**V-50.13**      프로브 체결 렌치  
290 918001 001      Wrench for measuring inserts



**TA-TO-003**      육각렌치 1.5 mm  
290 000911 003      Allen key 1.5 mm



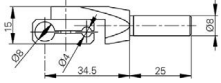
**V-50.15**      육각렌치 2.5 mm  
290 000911 005      Allen key 2.5 mm



**TA-SE-102**  
605 01 008

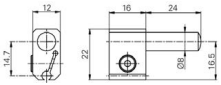
프로브 세트 "Micro" (20피스)  
Set of accessories "Micro" (20pcs)

V3 V4 V5 V6 V7 **V8 V9**



**TA-IH-104**  
612 11 053

깊이 측정용 회전 홀더, Ø4 and Ø8 mm  
Swivel holder Ø4 and Ø8 mm



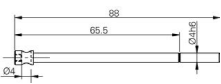
**V-5**  
612 11 012

프로브 호환 홀더, Ø8/Ø4 mm  
Reduction Ø8/4 mm



**V-50.6**  
279 918002 002

깊이 측정용 홀더, M2.5, 길이 L=80 mm  
Measuring insert holder M2.5, L=80 mm



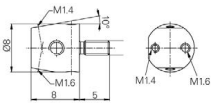
**V-50.8**  
279 918001 001

깊이 측정용 홀더, 90°, Ø4 mm  
Insert holder 90°, Ø4 mm



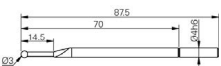
**TA-IH-116**  
279 918001 003

핀 프로브 홀더, Ø1x10 mm, 길이 L=80 mm  
Measuring insert holder, Ø1x10 mm, L=80 mm



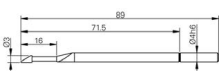
**TA-IH-117**  
512 11 20 0012

프로브 홀더, M2.5, M1.6, M1.4  
Holder for measuring inserts M2.5, M1.6, M1.4



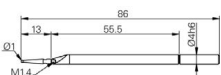
**TA-MI-109**  
279 918011 003

루비 볼 프로브, Ø3 mm, 길이 L=87.5 mm  
Measuring insert with ruby ball Ø3 mm, L=87.5 mm



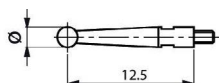
**V-50.10**  
279 918007 001

나이프 에지 프로브  
Knife-edge insert



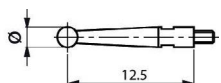
**V-50.12**  
279 918012 001

초경 볼 프로브, Ø1 mm, 길이 L=86 mm  
Measuring insert Ø1 mm with holder, L=86 mm



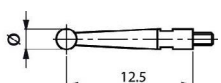
**TA-MI-115**  
279 901001 001

초경 볼 프로브, Ø1 mm, 길이 L=12.5mm, M1.4  
Measuring insert M1.4 with ball Ø1 mm, L=12.5 mm



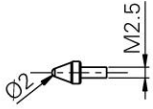
**TA-MI-116**  
279 901001 002

초경 볼 프로브, Ø2 mm, 길이 L=12.5mm, M1.4  
Measuring insert M1.4 with ball Ø2 mm, L=12.5 mm

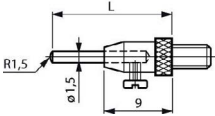


**TA-MI-117**  
279 901001 003

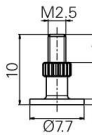
초경 볼 프로브, Ø3 mm, 길이 L=12.5mm, M1.4  
Measuring insert M1.4 with ball Ø3 mm, L=12.5 mm



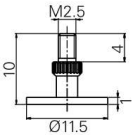
**V-50.4**      깊이 측정용 볼 프로브, Ø2 mm, M2.5  
279 918010 001      Measuring insert M2,5 with ball contact



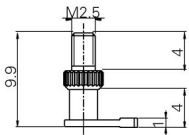
**TA-MI-118**      핀 프로브 세트, M2.5, 길이 L=16/26/36/46 mm  
279 901003 001      Measuring insert M2.5 with 4 interchangeable pins, L=16/26/36/46 mm



**V-50.2.1**      디스크형 프로브, Ø7.7 mm, M2.5  
279 918005 002      Disc-shaped inserts M2.5, Ø7.7 mm



**V-50.2.2**      디스크형 프로브, Ø11.5 mm, M2.5  
279 918005 003      Disc-shaped insert M2.5, Ø11.5 mm



**V-50.3**      코너 프로브, M2.5  
279 918008 001      Corner insert M2.5



**V-50.13**      프로브 체결 렌치  
290 918001 001      Wrench for measuring inserts



**TA-TO-003**      육각렌치 1.5 mm  
290 000911 003      Allen key 1.5 mm



**V-50.15**      육각렌치 2.5 mm  
290 000911 005      Allen key 2.5 mm

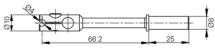




**TA-SE-107**  
605 01 024

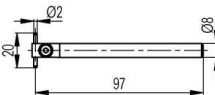
프로브 세트 "Eco" (7피스)  
Set of accessories "Eco" (7pcs)

V3 V4 V5 V6 V7 V8 V9



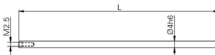
**TA-IH-109**  
612 11 054

깊이 측정용 홀더, 90°, Ø4 mm  
Insert holder 90°, Ø4 mm



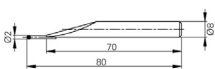
**TVA4**  
609 05 007

핀 프로브 홀더, Ø2x20 mm  
Insert holder with pin Ø2x20 mm



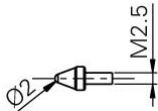
**V-50.5**  
279 918002 001

깊이 측정용 홀더, M2.5, 길이 L=124 mm  
Measuring insert holder M2.5, L=124 mm



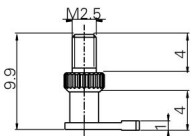
**TA-MI-110**  
509 05 20 0077

초경 볼 프로브, Ø2 mm, 길이 L=80 mm  
Measuring insert with tungst. carb. ball Ø2 mm,  
L=80 mm



**V-50.4**  
279 918010 001

깊이 측정용 볼 프로브, Ø2 mm, M2.5  
Measuring insert M2,5 with ball contact



**V-50.3**  
279 918008 001

코너 프로브, M2.5  
Corner insert M2.5



**V-50.15**  
290 000911 005

육각렌치 2.5 mm  
Allen key 2.5 mm



### **Measure M 본사**

경기도 의왕시 이미로 40길. 인덕원IT벨리 C동 903호

T. 031 423 0426 Fax. 031 423 0427

김종국 대표/팀장 010 3915 7337

kook@measurem.co.kr

### **Measure M 지사**

경남 창원시 의창구 차상로 150번길10 3층 323호

T. 070 8825 0140 Fax. 050 4313 0140

남창훈 대표/팀장 010 3830 0140

25kg@measurem.co.kr